



Test Report

No.T32020280626TC

Date: SEP 03, 2020

Page 1 of 5

BIC GRAPHIC

14421 MYERLAKE CIRCLE CLEARWATER
PINELLAS FL 33760 UNITED STATES

The following samples were submitted and identified by/on behalf of the client as:

REUSABLE FACE MASK

Item No. : 41164
Shipment Order Number : PO 7113284, PO 7113913, PO 7116520
Manufacture Date : 2019
Test Request Form No. : 4202_HK
Country of Origin : CHINA
Country of Destination : CANADA, UNITED STATES
Sample Receiving Date : AUG 27, 2020
Testing Period : AUG 27, 2020 TO SEP 03, 2020

This document is issued by the Company subject to its General Conditions of Service printed overleaf, available on request or accessible at <http://www.sgs.com/en/Terms-and-Conditions.aspx> and, for electronic format documents, subject to Terms and Conditions for Electronic Documents at <http://www.sgs.com/en/Terms-and-Conditions/Terms-e-Document.aspx>. Attention is drawn to the limitation of liability, indemnification and jurisdiction issues defined therein. Any holder of this document is advised that information contained hereon reflects the Company's findings at the time of its intervention only and within the limits of Client's instructions, if any. The Company's sole responsibility is to its Client and this document does not exonerate parties to a transaction from exercising all their rights and obligations under the transaction documents. This document cannot be reproduced except in full, without prior written approval of the Company. Any unauthorized alteration, forgery or falsification of the content or appearance of this document is unlawful and offenders may be prosecuted to the fullest extent of the law.

Unless otherwise stated the results shown in this test report refer only to the sample(s) tested and such sample(s) are retained for 30 days only.



Test Requested		Conclusion
1.	CPSIA section 101 - Total Lead content (Selected test items as specified by the applicant, please refer to test result page(s) for details)	--
	CPSIA section 101(f) (1) – Lead in paint/similar surface coating material	NOT APPLICABLE (SEE REMARK)
	CPSIA section 101(a) (2) – Lead in accessible substrate materials (Including Children’s Metal Jewelry)	PASS
2.	US California Proposition 65 (County of Marin Case No. CIV 1104003) – Lead Content (Selected test items as specified by the applicant, please refer to test result page(s) for details)	PASS

Remark : There were no surface coating found in the said submitted sample.

***** FOR FURTHER DETAILS, PLEASE REFER TO THE FOLLOWING PAGE(S) *****

Signed for and on behalf of
SGS Hong Kong Ltd.



To Man Wah, Po
Technical Manager

This document is issued by the Company subject to its General Conditions of Service printed overleaf, available on request or accessible at <http://www.sgs.com/en/Terms-and-Conditions.aspx> and, for electronic format documents, subject to Terms and Conditions for Electronic Documents at <http://www.sgs.com/en/Terms-and-Conditions/Terms-e-Document.aspx>. Attention is drawn to the limitation of liability, indemnification and jurisdiction issues defined therein. Any holder of this document is advised that information contained hereon reflects the Company’s findings at the time of its intervention only and within the limits of Client’s instructions, if any. The Company’s sole responsibility is to its Client and this document does not exonerate parties to a transaction from exercising all their rights and obligations under the transaction documents. This document cannot be reproduced except in full, without prior written approval of the Company. Any unauthorized alteration, forgery or falsification of the content or appearance of this document is unlawful and offenders may be prosecuted to the fullest extent of the law.

Unless otherwise stated the results shown in this test report refer only to the sample(s) tested and such sample(s) are retained for 30 days only.

Test Results:

1. CPSIA - Lead in Accessible Substrate Materials

Method (non-metallic materials): With reference to CPSC-CH-E1002-08.3 - Standard Operation Procedure for Determining Total Lead (Pb) in Non-Metal Children Product

Test Item(s)	Lead (Pb)
Permissible Limit ** (ppm)	100
Specimen Description	Result(s) (ppm)
1. Black fabric (Mask) (#1-41164 Black polyester fabric)	ND
2. Light blue fabric (Mask) (#2-41164 Light-Blue polyester fabric)	ND
3. Red fabric (Mask) (#3-41164 Red polyester fabric)	ND
4. Dark blue fabric (Mask) (#4-41164 Navy polyester fabric)	ND
5. Sage green fabric (Mask) (#5-41164 Sage Green polyester fabric)	ND
6. Dark grey fabric (Mask) (#6-41164 Charcoal polyester fabric)	ND
7. Blue fabric (Mask) (#7-41164 Royal polyester fabric)	ND
8. Purple fabric (Mask) (#8-41164 Purple polyester fabric)	ND
9. Grey w/ white fabric (Mask) (#9-41164 Gray cotton fabric)	ND
10. Black fabric w/ black rubber core (Elastic band) (#10-41164 Black fabric with rubber earloop)	ND

** Permissible Limit applies to a children’s product manufactured after 14 August 2011 (Public Law 110-314 (Consumer Product Safety Improvement Act of 2008) and its Amendments Public Law 112-28)

- Note:
- ppm = parts per million
 - ND = Not Detected (lower than MDL)
 - MDL = Method Detection Limit = 10 ppm
 - 1% = 10000 mg/kg = 10000 ppm
 - Result(s) of specimen No.1 - No.6 is(are) extracted from report No. T32020261216TC.
 - Result(s) of specimen No.9 - No.10 is(are) extracted from report No. T32020261216TC.

This document is issued by the Company subject to its General Conditions of Service printed overleaf, available on request or accessible at <http://www.sgs.com/en/Terms-and-Conditions.aspx> and, for electronic format documents, subject to Terms and Conditions for Electronic Documents at <http://www.sgs.com/en/Terms-and-Conditions/Terms-e-Documents.aspx>. Attention is drawn to the limitation of liability, indemnification and jurisdiction issues defined therein. Any holder of this document is advised that information contained hereon reflects the Company’s findings at the time of its intervention only and within the limits of Client’s instructions, if any. The Company’s sole responsibility is to its Client and this document does not exonerate parties to a transaction from exercising all their rights and obligations under the transaction documents. This document cannot be reproduced except in full, without prior written approval of the Company. Any unauthorized alteration, forgery or falsification of the content or appearance of this document is unlawful and offenders may be prosecuted to the fullest extent of the law.

Unless otherwise stated the results shown in this test report refer only to the sample(s) tested and such sample(s) are retained for 30 days only.

2. US California Proposition 65 – Total Lead Content

Method (non-metallic materials): With reference to CPSC-CH-E1002-08.3 - Standard Operation Procedure for Determining Total Lead (Pb) in Non-Metal Children Product

Analysis was performed by Inductively Coupled Plasma Optical Emission Spectrometer (ICP-OES)

Test Item(s)	Lead (Pb)
Specimen Description	Result(s) (ppm)
1. Black fabric (Mask) (#1-41164 Black polyester fabric)	ND
2. Light blue fabric (Mask) (#2-41164 Light-Blue polyester fabric)	ND
3. Red fabric (Mask) (#3-41164 Red polyester fabric)	ND
4. Dark blue fabric (Mask) (#4-41164 Navy polyester fabric)	ND
5. Sage green fabric (Mask) (#5-41164 Sage Green polyester fabric)	ND
6. Dark grey fabric (Mask) (#6-41164 Charcoal polyester fabric)	ND
7. Blue fabric (Mask) (#7-41164 Royal polyester fabric)	ND
8. Purple fabric (Mask) (#8-41164 Purple polyester fabric)	ND
9. Grey w/ white fabric (Mask) (#9-41164 Gray cotton fabric)	ND
10. Black fabric w/ black rubber core (Elastic band) (#10-41164 Black fabric with rubber earloop)	ND

- Note:
- ppm = parts per million
 - ND = Not Detected (lower than MDL)
 - MDL = Method Detection Limit =10 ppm
 - 1% = 10000mg/kg=10000ppm
 - Result(s) of specimen No.1 - No.6 is(are) extracted from report No. T32020261216TC.
 - Result(s) of specimen No.9 - No.10 is(are) extracted from report No. T32020261216TC.

Remark: Summary of permissible limit(s) of Lead requirement:

Requirement(s)		Permissible Limit of Lead (ppm)	Effective Date
California Proposition 65 (County of Marin Case No. CIV 1104003)	Paint and surface coating	90	Current
	All other materials	100	Current

This document is issued by the Company subject to its General Conditions of Service printed overleaf, available on request or accessible at <http://www.sgs.com/en/Terms-and-Conditions.aspx> and, for electronic format documents, subject to Terms and Conditions for Electronic Documents at <http://www.sgs.com/en/Terms-and-Conditions/Terms-e-Documents.aspx>. Attention is drawn to the limitation of liability, indemnification and jurisdiction issues defined therein. Any holder of this document is advised that information contained hereon reflects the Company's findings at the time of its intervention only and within the limits of Client's instructions, if any. The Company's sole responsibility is to its Client and this document does not exonerate parties to a transaction from exercising all their rights and obligations under the transaction documents. This document cannot be reproduced except in full, without prior written approval of the Company. Any unauthorized alteration, forgery or falsification of the content or appearance of this document is unlawful and offenders may be prosecuted to the fullest extent of the law.

Unless otherwise stated the results shown in this test report refer only to the sample(s) tested and such sample(s) are retained for 30 days only.

Remark:

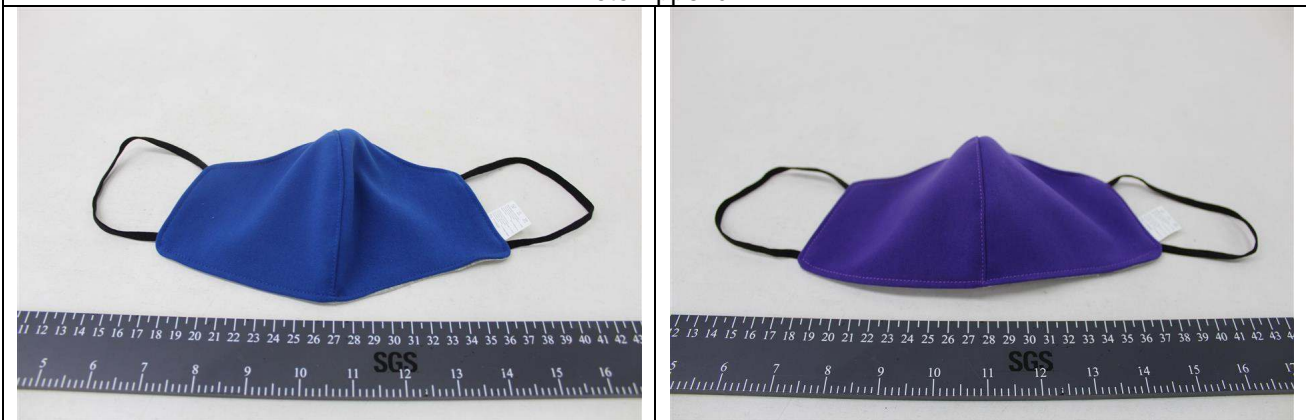
When statement of conformity is made, unless inherent in the requested specification or instructed by the applicant, the decision rule would be based on the non-binary statement with guard band (is equal to the expanded measurement uncertainty with a 95% coverage probability, $w = U_{95}$) in ILAC-G8:09/2019 Clause 4.2.3.

“Pass - the measured value is within (or below / above) the acceptance limit, where the acceptance limit is below / above to the guard band.” or “Pass - The measured values were observed in tolerance at the points tested. The specific false accept risk is up to 2.5%.”

“Fail - the measured value is out of (or below / above) the tolerance limit added / subtracted to the guard band.” or “Fail - One or more measured values were observed out of tolerance at the points tested”. The specific false reject risk is up to 2.5%.

“Inconclusive – It is not possible to state the conformity. Either one or more measured values were observed in the portion of the expanded measurement uncertainty intervals at the points tested where the specific risk is up to 50%.”

Photo Appendix



Sample As received



Report Photo Extracted From The Test Report Number T32020261216TC

SGS authenticate the photo on original report only

*** End of Report ***

This document is issued by the Company subject to its General Conditions of Service printed overleaf, available on request or accessible at <http://www.sgs.com/en/Terms-and-Conditions.aspx> and, for electronic format documents, subject to Terms and Conditions for Electronic Documents at <http://www.sgs.com/en/Terms-and-Conditions/Terms-e-Documents.aspx>. Attention is drawn to the limitation of liability, indemnification and jurisdiction issues defined therein. Any holder of this document is advised that information contained hereon reflects the Company's findings at the time of its intervention only and within the limits of Client's instructions, if any. The Company's sole responsibility is to its Client and this document does not exonerate parties to a transaction from exercising all their rights and obligations under the transaction documents. This document cannot be reproduced except in full, without prior written approval of the Company. Any unauthorized alteration, forgery or falsification of the content or appearance of this document is unlawful and offenders may be prosecuted to the fullest extent of the law.

Unless otherwise stated the results shown in this test report refer only to the sample(s) tested and such sample(s) are retained for 30 days only.