



Test Report

No.T32020320933TC

Date: JAN 20, 2021

Page 1 of 5

KOOZIE GROUP

14421 MYERLAKE CIRCLE CLEARWATER,
PINELLAS,FL 33760,UNITED STATES

The following samples were submitted and identified by/on behalf of the client as:

MEDALLION.ZINC.RQC RECTANGLE;
MEDALLION.BRASS.QC ROUND;
MEDALLION.ZINC.QC ROUND;PLATE.BRASS.BPL

Item No. : VARIOUS
Manufacture Date : 2020
Test Request Form No. : 4288_HK
Shipment Order Number : PO# 7123433
Country of Origin : CHINA
Country of Destination : CANADA, UNITED STATES
Sample Receiving Date : DEC 28, 2020
Further Information Date : JAN 19, 2021
Testing Period : DEC 28, 2020 TO JAN 20, 2021

This document is issued by the Company subject to its General Conditions of Service printed overleaf, available on request or accessible at <http://www.sgs.com/en/Terms-and-Conditions.aspx> and, for electronic format documents, subject to Terms and Conditions for Electronic Documents at <http://www.sgs.com/en/Terms-and-Conditions/Terms-e-Document.aspx>. Attention is drawn to the limitation of liability, indemnification and jurisdiction issues defined therein. Any holder of this document is advised that information contained hereon reflects the Company's findings at the time of its intervention only and within the limits of Client's instructions, if any. The Company's sole responsibility is to its Client and this document does not exonerate parties to a transaction from exercising all their rights and obligations under the transaction documents. This document cannot be reproduced except in full, without prior written approval of the Company. Any unauthorized alteration, forgery or falsification of the content or appearance of this document is unlawful and offenders may be prosecuted to the fullest extent of the law.

Unless otherwise stated the results shown in this test report refer only to the sample(s) tested and such sample(s) are retained for 30 days only.





Test Report

No.T32020320933TC

Date: JAN 20, 2021

Page 2 of 5

Test Requested		Conclusion
1.	CPSIA section 101 - Total Lead content	--
1.1	CPSIA section 101(f) (1) – Lead in paint/similar surface coating material	NOT APPLICABLE (SEE REMARK)
1.2	CPSIA section 101(a) (2) – Lead in accessible substrate materials (Including Children’s Metal Jewelry)	PASS
2.	US California Proposition 65 (County of Marin Case No. CIV 1104003) – Lead Content	PASS

Remark: There were no surface coating found in the said submitted sample.

***** FOR FURTHER DETAILS, PLEASE REFER TO THE FOLLOWING PAGE(S) *****

Signed for and on behalf of
SGS Hong Kong Ltd.

To Man Wah, Po
Technical Manager

This document is issued by the Company subject to its General Conditions of Service printed overleaf, available on request or accessible at <http://www.sgs.com/en/Terms-and-Conditions.aspx> and, for electronic format documents, subject to Terms and Conditions for Electronic Documents at <http://www.sgs.com/en/Terms-and-Conditions/Terms-e-Documents.aspx>. Attention is drawn to the limitation of liability, indemnification and jurisdiction issues defined therein. Any holder of this document is advised that information contained hereon reflects the Company's findings at the time of its intervention only and within the limits of Client's instructions, if any. The Company's sole responsibility is to its Client and this document does not exonerate parties to a transaction from exercising all their rights and obligations under the transaction documents. This document cannot be reproduced except in full, without prior written approval of the Company. Any unauthorized alteration, forgery or falsification of the content or appearance of this document is unlawful and offenders may be prosecuted to the fullest extent of the law.

Unless otherwise stated the results shown in this test report refer only to the sample(s) tested and such sample(s) are retained for 30 days only.



Test Report

No.T32020320933TC

Date: JAN 20, 2021

Page 3 of 5

Test Results:

1.2 CPSIA - Lead in Accessible Substrate Materials

Method (metal materials): With reference to CPSC-CH-E1001-08.3 - Standard Operating Procedure for Determining Total Lead (Pb) in Children's Metal Products (Including Children's Metal Jewelry)

Test Item(s)	Lead (Pb)
Permissible Limit ** (ppm)	100
Specimen Description	Result(s) (ppm)
1. Silvery metal parts (#1-VARIOUS MEDALLION.ZINC.RQC RECTANGLE; MEDALLION.ZINC.QC ROUND)	84
2. Brassy metal part (#2-VARIOUS MEDALLION.BRASS.QC ROUND)	84
3. Brassy metal part (#2-VARIOUS MEDALLION. PLATE. BRASS. BPL)	73

** Permissible Limit applies to a children's product manufactured after 14 August 2011 (Public Law 110-314 (Consumer Product Safety Improvement Act of 2008) and its Amendments Public Law 112-28)

- Note:
- ppm = parts per million
 - MDL = Method Detection Limit = 10 ppm
 - 1% = 10000 mg/kg = 10000 ppm

This document is issued by the Company subject to its General Conditions of Service printed overleaf, available on request or accessible at <http://www.sgs.com/en/Terms-and-Conditions.aspx> and, for electronic format documents, subject to Terms and Conditions for Electronic Documents at <http://www.sgs.com/en/Terms-and-Conditions/Terms-e-Documents.aspx>. Attention is drawn to the limitation of liability, indemnification and jurisdiction issues defined therein. Any holder of this document is advised that information contained hereon reflects the Company's findings at the time of its intervention only and within the limits of Client's instructions, if any. The Company's sole responsibility is to its Client and this document does not exonerate parties to a transaction from exercising all their rights and obligations under the transaction documents. This document cannot be reproduced except in full, without prior written approval of the Company. Any unauthorized alteration, forgery or falsification of the content or appearance of this document is unlawful and offenders may be prosecuted to the fullest extent of the law.

Unless otherwise stated the results shown in this test report refer only to the sample(s) tested and such sample(s) are retained for 30 days only.

2. US California Proposition 65 – Total Lead Content

Method (metal materials): With reference to CPSC-CH-E1001-08.3 - Standard Operating Procedure for Determining Total Lead (Pb) in Children’s Metal Products (Including Children’s Metal Jewelry)

Analysis was performed by Inductively Coupled Plasma Optical Emission Spectrometer (ICP-OES)

Test Item(s)	Lead (Pb)
Specimen Description	Result(s) (ppm)
1. Silvery metal parts (#1-VARIOUS MEDALLION.ZINC.RQC RECTANGLE; MEDALLION.ZINC.QC ROUND)	84
2. Brassy metal part (#2-VARIOUS MEDALLION.BRASS.QC ROUND)	84
3. Brassy metal part (#2-VARIOUS MEDALLION. PLATE. BRASS. BPL)	73

- Note:
- ppm = parts per million
 - MDL = Method Detection Limit =10 ppm
 - 1% = 10000mg/kg=10000ppm

Remark: Summary of permissible limit(s) of Lead requirement:

Requirement(s)	Permissible Limit of Lead (ppm)	Effective Date
California Proposition 65 (County of Marin Case No. CIV 1104003)	Paint and surface coating	Current
	All other materials	Current

This document is issued by the Company subject to its General Conditions of Service printed overleaf, available on request or accessible at <http://www.sgs.com/en/Terms-and-Conditions.aspx> and, for electronic format documents, subject to Terms and Conditions for Electronic Documents at <http://www.sgs.com/en/Terms-and-Conditions/Terms-e-Documents.aspx>. Attention is drawn to the limitation of liability, indemnification and jurisdiction issues defined therein. Any holder of this document is advised that information contained hereon reflects the Company’s findings at the time of its intervention only and within the limits of Client’s instructions, if any. The Company’s sole responsibility is to its Client and this document does not exonerate parties to a transaction from exercising all their rights and obligations under the transaction documents. This document cannot be reproduced except in full, without prior written approval of the Company. Any unauthorized alteration, forgery or falsification of the content or appearance of this document is unlawful and offenders may be prosecuted to the fullest extent of the law.

Unless otherwise stated the results shown in this test report refer only to the sample(s) tested and such sample(s) are retained for 30 days only.

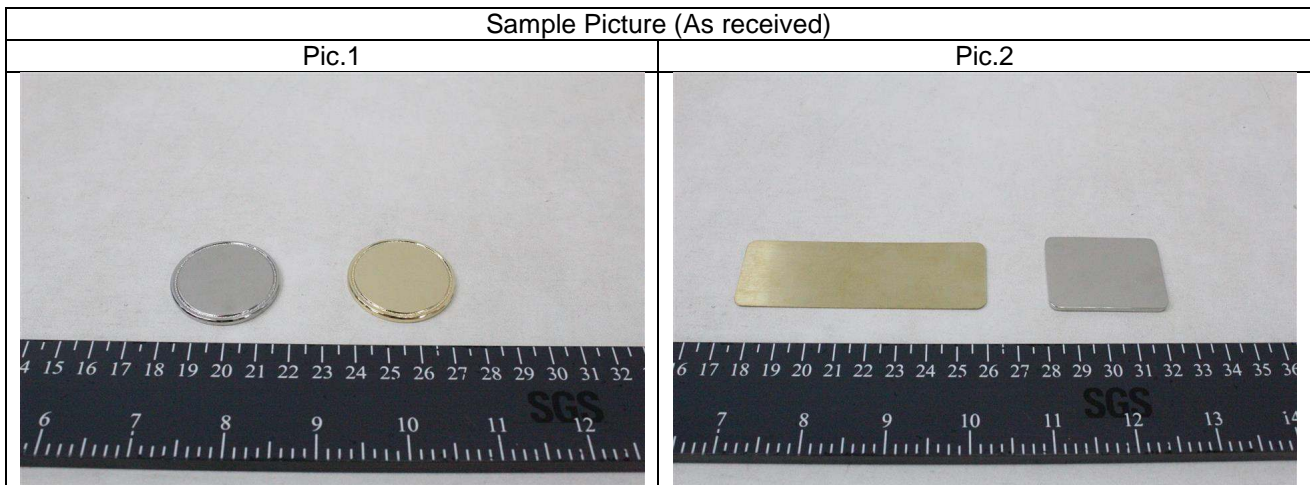
Remark:

When statement of conformity is made, unless the decision rule was mentioned in above specified test items, the decision rule would be based on the non-binary statement with guard band (is equal to the expanded measurement uncertainty with a 95% coverage probability, $w = U_{95}$) in ILAC-G8:09/2019 Clause 4.2.3.

“Pass - the measured value is within (or below / above) the acceptance limit, where the acceptance limit is below / above to the guard band.” or “Pass - The measured values were observed in tolerance at the points tested. The specific false accept risk is up to 2.5%.”.

“Fail - the measured value is out of (or below / above) the tolerance limit added / subtracted to the guard band.” or “Fail - One or more measured values were observed out of tolerance at the points tested”. The specific false reject risk is up to 2.5%.

“Inconclusive – It is not possible to state the conformity. Either one or more measured values were observed in the portion of the expanded measurement uncertainty intervals at the points tested where the specific risk is up to 50%.”



SGS authenticate the photo on original report only

*** End of Report ***

This document is issued by the Company subject to its General Conditions of Service printed overleaf, available on request or accessible at <http://www.sgs.com/en/Terms-and-Conditions.aspx> and, for electronic format documents, subject to Terms and Conditions for Electronic Documents at <http://www.sgs.com/en/Terms-and-Conditions/Terms-e-Documents.aspx>. Attention is drawn to the limitation of liability, indemnification and jurisdiction issues defined therein. Any holder of this document is advised that information contained hereon reflects the Company's findings at the time of its intervention only and within the limits of Client's instructions, if any. The Company's sole responsibility is to its Client and this document does not exonerate parties to a transaction from exercising all their rights and obligations under the transaction documents. This document cannot be reproduced except in full, without prior written approval of the Company. Any unauthorized alteration, forgery or falsification of the content or appearance of this document is unlawful and offenders may be prosecuted to the fullest extent of the law.

Unless otherwise stated the results shown in this test report refer only to the sample(s) tested and such sample(s) are retained for 30 days only.